

KEY TO COLOR CODE			
B	BLUE	W	WHITE
G	GREEN	Y	YELLOW
R	RED	Unspecified	BLACK

1. Key switch
2. Speed switch
3. Micro-switch
4. Charger plug
5. Motor
6. Resistor
7. Solenoid
8. Battery

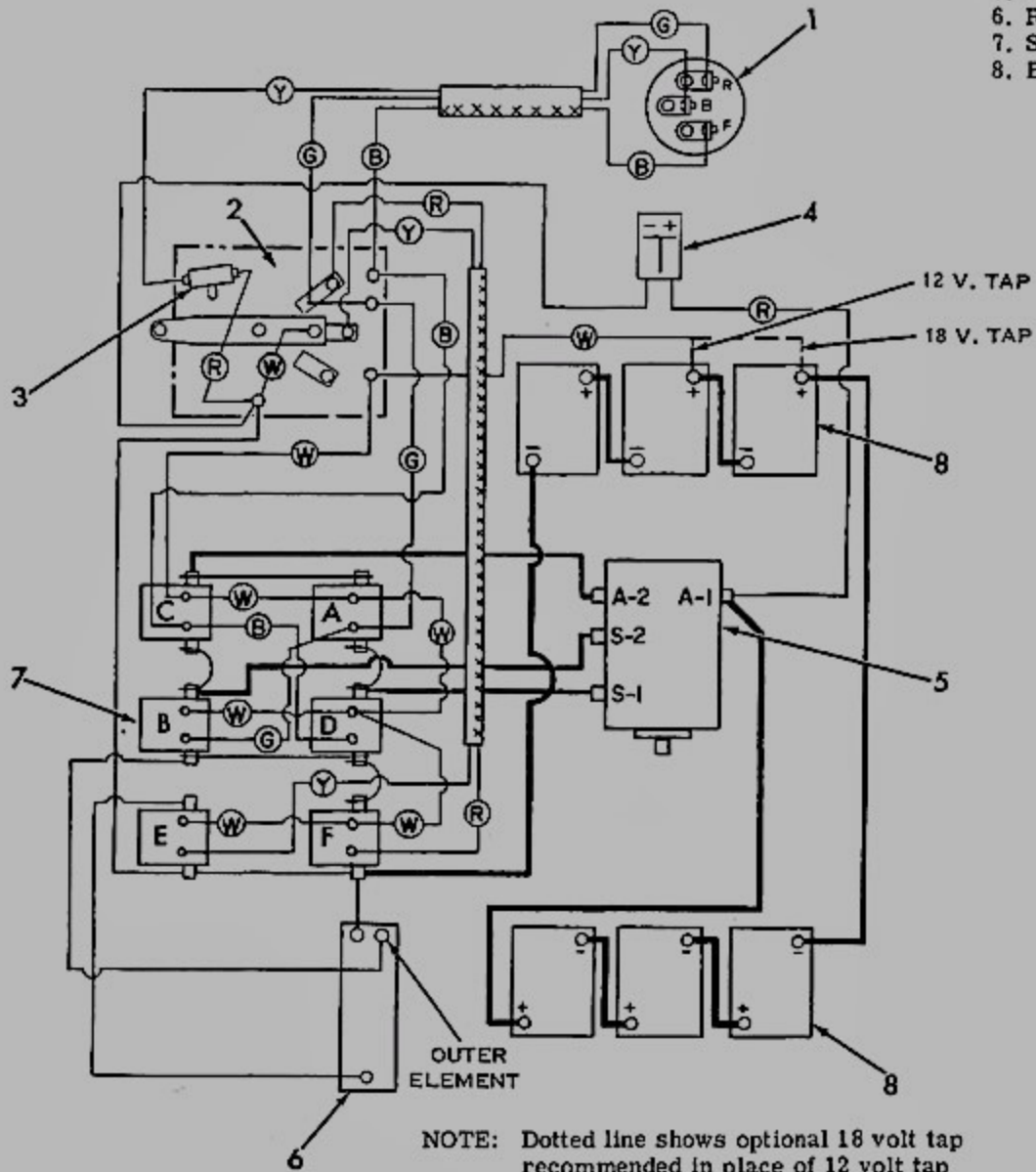


Figure 5-25. 1966 Model DE Wiring Diagram