

Procedure

Reference:	PR20201118-01		
Version:	01.0	Category:	C

TITLE

Front hub makes noise while driving

MODEL

Mechanical front hub

GOAL

Quality improvement

Performance

Upgrade

PARTS INFO

Down time

√

Maintenance

√

Work around

√

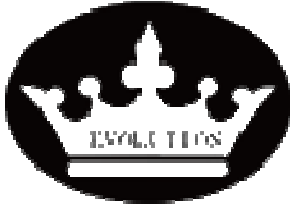
Others:

VERSION CONTROL:

Author:	Version:	Date:	Change/update:
Arvin	01.0	2020/11/18	

TOOLS REQUIRED

- 1* Adjustable open wrench
- 1* Flat screwdriver
- 1 * Adjustable 3-Jaw Puller Fits
- 1* Pliers
- 1* Hammer



Procedure

Reference:	PR20201118-01		
Version:	01.0	Category:	C

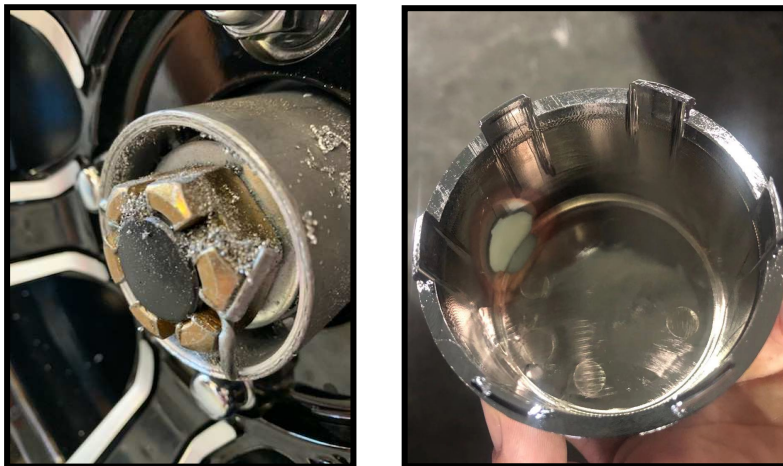
HOWTO DO?

1.1 Check whether the wheel center dust cap against the cotter pin.

- 1.1.1 Remove the wheel center dust cap from front wheels to reach the front hub.

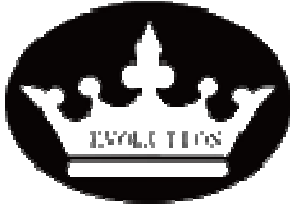


- 1.1.2 Inspect the inner side of center dust cap and the cotter pin fixing the slotted nut to check whether there is any scratching marks or chips.



- 1.1.3 Road test the cart to check whether the noise still exists. If the noise is gone, then go to step 1.1.4. If the noise still exists, then go to Step 1.2.

- 1.1.4 Re-install the cotter pin and use hammer to hit the cotter pin to fit the spindle end face. Make sure the cotter pin not against the center dust cap any more. Stop here.



Procedure

Reference:	PR20201118-01		
Version:	01.0	Category:	C



Cotter Pin

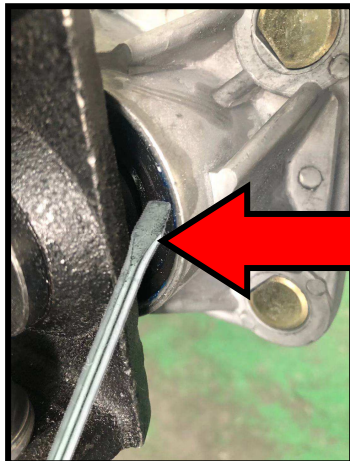
1.2 Hub oil seal inspection and adjustment.

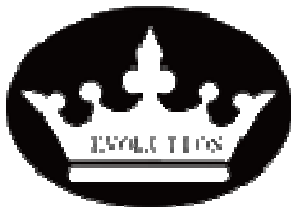
- 1.2.1 Inspect the grease/oil seal on the inner side of front hub to check whether the oil seal is installed properly or not.



Grease/oil seal for front hub

- 1.2.2 Use a flat screwdriver to poke the oil seal for adjusting the oil seal to the proper position.





Procedure

Reference:	PR20201118-01		
Version:	01.0	Category:	C

- 1.2.3 Road test the cart to check whether the noise still exists. If the noise is gone, then stop. If the noise still exists, then go to Step 1.3

1.3 Front hub castellated nut adjustment.

- 1.3.1 Remove wheel center dust cap.
1.3.2 Remove the cotter pin fixing the castellated nut.



- 1.3.3 Use the open wrench to loose the castellated nut, rotate this castellated nut antclockwise for about semi-cycle.



- 1.3.4 Put the cotter pins and tires back. Road test the cart to check whether the noise still exists. If the noise is gone, then stop. If the noise still exists, then go to Step 1.4.

1.4 Add enough grease to the hub bearings or Replace a new bearing.