



# CLASSIC 4 PRO

## BODY & CHASSIS

TPO injection moulding front and rear body

## POWER

Trojan Battery T875  
48V 4KW AC motor  
300 AMP Curtis AC Controller  
25mph max speed

## DIMENSIONS

Classic 4 pro: 113"x55"x76"

## FEATURES

- Two tone seat
- Color matched dashboard with four cup holders/cell phone holder
- Plastic rear seat kit with storage & cup/cell phone holders
- 14" Alum Wheel with color matched insert/215/35R14 Radial DOT Tire
- Speedometer
- Full DOT seat belts
- USB
- Evolution on-board smart charger
- LED Headlights, LED tail lights, brake lights, turn signals, horn
- Rear view mirrors
- Clear foldable windshield
- Extended roof

## OPTION

- Lithium 110AH battery
- Tinted windshield

## LSV Package 1

- 1.MSO
- 2.VIN number
- 3.License plate light
- 4.Reflectors
- 5.DOT foldable acrylic windshield

## LSV Package 2

- 1.MSO
- 2.VIN number
- 3.License plate light
- 4.Reflectors
- 5.DOT solid acrylic windshield
- 6.Electric wiper
- 7.Four-wheel hydraulic brake (motor brake)



Speedometer



Color matched Dash with four cup holders/cell phone holder



14" Color Matched Radial DOT Tire



Two tone seat



Plastic rear seat kit with storage & cup/cell phone holders

## Optional color

WHITE	YELLOW	BLUE	RED	BLACK	COPPER
SILVER	GOLD	NAVY BLUE	CANDY APPLE	LIME GREEN	

## EVOLUTION ELECTRIC VEHICLES INC

California Head Quarter: 15830 El Prado road, Unit D, Chino, CA 91708

Florida Operations: 3420 SW 7th st., Suite# 101, Ocala FL 34474

(352) 291-9381 info@evolutionelectricvehicle.com

www.evolutionelectricvehicle.com



# CLASSIC 4 PLUS



## LITHIUM BATTERY

● 5 YEAR WARRANTY ● NO MAINTENANCE ● ALUMINUM PACK



### BODY & CHASSIS

TPO injection moulding front and rear body

### DIMENSIONS

Classic 4 plus: 103"x55"x74"

### POWER

48V Lithium 130AH  
48V 6.3KW AC motor  
400 Amp Curtis AC controller  
25mph max speed

### FEATURES

- Two tone seat
- Color matched Dash with four cup holders / cell phone holder
- Plastic rear seat kit with storage & cup/cell phone holders
- 14" Alum Wheel with black insert/215/35R14 Radial DOT Tire colored decorative wheel trim
- USB
- 9 inch touchscreen with back-up camera  
(Radio, Music, Speedometer, Bluetooth, Back-up camera, Car App connection)



9 inch touchscreen with back-up camera



Color matched Dash with four cup holders/cell phone holder



14" Alum Wheel with black insert/215/35R14 Radial DOT Tire



Car Stereo



Plastic rear seat kit with storage & cup/cell phone holders

### Optional color

WHITE	YELLOW	BLUE	RED	BLACK	COPPER
SILVER	GOLD	NAVY BLUE	CANDY APPLE	LIME GREEN	

### EVOLUTION ELECTRIC VEHICLES INC

California Head Quarter: 15830 El Prado road, Unit D, Chino, CA 91708  
Florida Operations: 3420 SW 7th st., Suite# 101, Ocala FL 34474  
(352) 291-9381 info@evolutionelectricvehicle.com  
www.evolutionelectricvehicle.com



IMAGE FOR ILLUSTRATION PURPOSES ONLY



IMAGE FOR ILLUSTRATION PURPOSES ONLY



# CLASSIC 2 PRO

## BODY & CHASSIS

TPO injection moulding front and rear body

## POWER

Trojan Battery T875  
48V 4KW AC motor  
300 AMP Curtis AC Controller  
25mph max speed

## DIMENSIONS

Classic 2 pro: 94" x 55" x 72"

## FEATURES

- Two tone seat
- Black dashboard with four cup holders/cell phone holder
- 14" Alum Wheel with black insert/215/35R14 Radial DOT Tire
- Speedometer
- Full DOT seat belts
- USB
- Evolution on-board smart charger
- LED Headlights, LED tail lights, brake lights, turn signals, horn
- Rear view mirrors
- Clear foldable windshield
- Golf bag holder
- Sweater basket

## OPTION

- Lithium 110AH battery
- Tinted windshield

## LSV Package 1

- 1.MSO
- 2.VIN number
- 3.License plate light
- 4.Reflectors
- 5.DOT foldable acrylic windshield

## LSV Package 2

- 1.MSO
- 2.VIN number
- 3.License plate light
- 4.Reflectors
- 5.DOT solid acrylic windshield
- 6.Electric wiper
- 7.Four-wheel hydraulic brake (motor brake)



Speedometer



Color matched Dash with four cup holders/cell phone holder



14"Alum Wheel with black insert/215/35R14 Radial DOT Tire



Two tone seat



Luxury steering wheel

## Optional color

WHITE	YELLOW	BLUE	RED	BLACK	COPPER
SILVE	GOLD	NAVY BLUE	CANDY APPLE	LIME GREEN	

## EVOLUTION ELECTRIC VEHICLES INC

California Head Quarter: 15830 El Prado road, Unit D, Chino, CA 91708  
Florida Operations: 3420 SW 7th st., Suite# 101, Ocala FL 34474  
(352) 291-9381 info@evolutionelectricvehicle.com  
www.evolutionelectricvehicle.com



# CLASSIC 2 PLUS



## LITHIUM BATTERY

● 5 YEAR WARRANTY ● NO MAINTENANCE ● ALUMINUM PACK



### BODY & CHASSIS

TPO injection moulding front and rear body

### DIMENSIONS

Classic 2 plus: 94"x55"x72"

### POWER

48V lithium battery pack  
48V 6.3KW AC motor  
400 Amp Curtis AC controller  
25mph max speed

### FEATURES

- Two tone seat
- Color matched Dash with four cup holders / cell phone holder
- 14" Alum Wheel with black insert/215/35R14 Radial DOT Tire colored decorative wheel trim
- USB
- 9 inch touchscreen with back-up camera  
(Radio, Music, Speedometer, Bluetooth, Back-up camera, Car App connection)



9 inch touchscreen with back-up camera



Color matched Dash with four cup holders/cell phone holder



14" Color Matched Radial DOT Tire



Two tone seat



Luxury steering wheel

Optional color					
WHITE	YELLOW	BLUE	RED	BLACK	COPPER
SILVE	GOLD	NAVY BLUE	CANDY APPLE	LIME GREEN	

### EVOLUTION ELECTRIC VEHICLES INC

California Head Quarter: 15830 El Prado road, Unit D, Chino, CA 91708  
Florida Operations: 3420 SW 7th st., Suite# 101, Ocala FL 34474  
(352) 291-9381 info@evolutionelectricvehicle.com  
www.evolutionelectricvehicle.com



IMAGE FOR ILLUSTRATION PURPOSES ONLY

# CARRIE 6 PLUS



## LITHIUM BATTERY

● 5 YEAR WARRANTY ● NO MAINTENANCE ● ALUMINUM PACK

### BODY & CHASSIS

TPO injection moulding front and rear body

### DIMENSIONS

Carrier 6 Plus: 144"x55"x76"

### POWER

48V Lithium 130AH  
48V 6.3KW AC motor  
400 Amp Curtis AC controller  
19mph max speed

### FEATURES

- Two tone seat
- Color matched Dash with four cup holders / cell phone holder
- Plastic rear seat kit with storage & cup/cell phone holders
- 14" Alum Wheel with black insert/215/35R14 Radial DOT Tire colored decorative wheel trim
- USB
- 9 inch touchscreen with back-up camera (Radio, Music, Speedometer, Bluetooth, Back-up camera, Car App connection)



9 inch touchscreen with back-up camera



Color matched Dash with four cup holders/cell phone holder



14" Alum Wheel with black insert/215/35R14 Radial DOT Tire



Car Stereo



Plastic rear seat kit with storage & cup/cell phone holders

Optional color

CANDY APPLE

WHITE

BLACK

NAVY BLUE

SILVER

### EVOLUTION ELECTRIC VEHICLES INC

California Head Quarter: 15830 El Prado road, Unit D, Chino, CA 91708  
Florida Operations: 3420 SW 7th st., Suite# 101, Ocala FL 34474  
(352) 291-9381 info@evolutionelectricvehicle.com  
www.evolutionelectricvehicle.com

IMAGE FOR ILLUSTRATION PURPOSES ONLY





IMAGE FOR ILLUSTRATION PURPOSES ONLY



# FORESTER 4 PRO

## BODY & CHASSIS

TPO injection moulding front and rear body

## DIMENSIONS

Forester 4 PRO: 117"x55"x83"

## POWER

48V Lithium 130AH  
48V 6.3KW AC motor  
400 Amp Curtis AC controller  
25mph max speed

## FEATURES

- Two tone seat
- Color matched Dash with four cup holders / cell phone holder
- Plastic rear seat kit with storage & cup/cell phone holders
- 14" Alum Wheel with black insert/215/35R14 Radial DOT Tire colored decorative wheel trim
- USB
- 9 inch touchscreen with back-up camera  
(Radio, Music, Speedometer, Bluetooth, Back-up camera, Car App connection)



Speedometer



Color matched Dash with four cup holders/cell phone holder



14" Color Matched Off Road Tire



Car Stereo



Plastic rear seat kit with storage & cup/cell phone holders

## Optional color

WHITE	YELLOW	BLUE	RED	BLACK	COPPER
SILVE	LIME GREEN	NAVY BLUE	CANDY APPLE		

## EVOLUTION ELECTRIC VEHICLES INC

California Head Quarter: 15830 El Prado road, Unit D, Chino, CA 91708  
Florida Operations: 3420 SW 7th st., Suite# 101, Ocala FL 34474  
(352) 291-9381 [info@evolutionelectricvehicle.com](mailto:info@evolutionelectricvehicle.com)  
[www.evolutionelectricvehicle.com](http://www.evolutionelectricvehicle.com)



# FORESTER 4 PLUS



## LITHIUM BATTERY

● 5 YEAR WARRANTY ● NO MAINTENANCE ● ALUMINUM PACK

### BODY & CHASSIS

TPO injection moulding front and rear body

### DIMENSIONS

Forester 4 plus: 117"x55"x83"

### POWER

48V Lithium 130AH  
48V 6.3KW AC motor  
400 Amp Curtis AC controller  
25mph max speed

### FEATURES

- Two tone seat
- Color matched Dash with four cup holders / cell phone holder
- Plastic rear seat kit with storage & cup/cell phone holders
- 14" Alum Wheel with black insert/215/35R14 Radial DOT Tire colored decorative wheel trim
- USB
- 9 inch touchscreen with back-up camera (Radio, Music, Speedometer, Bluetooth, Back-up camera, Car App connection)



9 inch touchscreen with back-up camera



Color matched Dash with four cup holders/cell phone holder



14" Color Matched Off Road Tire



Car Stereo



Plastic rear seat kit with storage & cup/cell phone holders

### Optional color

WHITE	YELLOW	BLUE	RED	BLACK	COPPER
SILVE	LIME GREEN	NAVY BLUE	CANDY APPLE		

### EVOLUTION ELECTRIC VEHICLES INC

California Head Quarter: 15830 El Prado road, Unit D, Chino, CA 91708  
Florida Operations: 3420 SW 7th st., Suite# 101, Ocala FL 34474  
(352) 291-9381 info@evolutionelectricvehicle.com  
www.evolutionelectricvehicle.com



# FORESTER 6 PLUS



## LITHIUM BATTERY

● 5 YEAR WARRANTY ● NO MAINTENANCE ● ALUMINUM PACK

### BODY & CHASSIS

TPO injection moulding front and rear body

### DIMENSIONS

Forester 6 plus: 148"x55"x87"

### POWER

48V Lithium 130AH  
48V 6.3KW AC motor  
400 Amp Curtis AC controller  
22mph max speed

### FEATURES

- Two tone seat
  - Color matched Dash with four cup holders / cell phone holder
  - Plastic rear seat kit with storage & cup/cell phone holders
  - 14" Alum Wheel with black insert/215/35R14 Radial DOT Tire colored decorative wheel trim
  - USB
  - 9 inch touchscreen with back-up camera
- (Radio, Music, Speedometer, Bluetooth, Back-up camera, Car App connection)



9 inch touchscreen with back-up camera



Color matched Dash with four cup holders/cell phone holder



14" Color Matched Off Road Tire



Car Stereo



Plastic rear seat kit with storage & cup/cell phone holders

Optional color

CANDY APPLE

SILVER

NAVY BLUE

WHITE

BLACK

LIME GREEN

### EVOLUTION ELECTRIC VEHICLES INC

California Head Quarter: 15830 El Prado road, Unit D, Chino, CA 91708  
Florida Operations: 3420 SW 7th st., Suite# 101, Ocala FL 34474  
(352) 291-9381 info@evolutionelectricvehicle.com  
www.evolutionelectricvehicle.com

IMAGE FOR ILLUSTRATION PURPOSES ONLY





IMAGE FOR ILLUSTRATION PURPOSES ONLY



# TURFMAN 1000 AC

## BODY & CHASSIS

TPO injection moulding front cowl

## DIMENSIONS

Turfman 1000: 131"x 55" x 72"

Cargo box: 43"x 65" x 11"

## POWER

Lithium 130AH battery

48V 6.3KW AC motor

400 AMP Curtis AC Controller

19mph max speed

## FEATURES

- Black dashboard with four cup holders/cell phone holder
- 14"Alum Wheel 215/35R14 Radial DOT Tire
- Speedometer
- USB
- Evolution on-board smart charger
- LED Headlights, LED tail lights, brake lights, turn signals, horn
- Rear view mirrors
- Clear foldable windshield



Luxury steering wheel



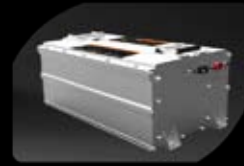
Color matched Dash with four cup holders/cell phone holder



14"Alum Wheel  
Radial DOT Tire



Two tone seat



Lithium battery

WHITE

Optional color

## EVOLUTION ELECTRIC VEHICLES INC

California Headquarters: 4552 Brickell Privado, Ontario CA 91761

Florida Operations: 3420 SW 7th st., Suite# 101, Ocala FL 34474

909-393-6800 info@evolutionelectricvehicle.com

www.evolutionelectricvehicle.com





# TURFMAN 200 PRO

## BODY & CHASSIS

TPO injection moulding front and rear body

## DIMENSIONS

Turfman 200: 94"x 55" x 72"  
cargo box: 43"x 35" x 11"

## POWER

Lithium 130AH battery  
48V 4KW AC motor  
300 AMP Curtis AC Controller  
22mph max speed

## FEATURES

- Black dashboard
- 14"Alum Wheel with black insert/215/35R14 Radial DOT Tire
- Speedometer
- USB
- Evolution on-board smart charger
- LED Headlights, LED tail lights, brake lights, turn signals, horn
- Rear view mirrors
- Clear foldable windshield



Speedometer



Color matched Dash with four cup holders/cell phone holder



14"Alum Wheel with black insert/215/35R14 Radial DOT Tire



Two tone seat



Luxury steering wheel

### Optional color

WHITE	YELLOW	BLUE	RED	BLACK	COPPER
SILVE	GOLD	NAVY BLUE	CANDY APPLE	LIME GREEN	

## EVOLUTION ELECTRIC VEHICLES INC

California Head Quarter: 15830 El Prado road, Unit D, Chino, CA 91708  
Florida Operations: 3420 SW 7th st., Suite# 101, Ocala FL 34474  
(352) 291-9381 info@evolutionelectricvehicle.com  
www.evolutionelectricvehicle.com





IMAGE FOR ILLUSTRATION PURPOSES ONLY



# TURFMAN 800 AC

## BODY & CHASSIS

TPO injection moulding front cowl

## DIMENSIONS

Turfman 800: 118"x 55" x 79"

Cargo box: 43"x 46"x 11"

## POWER

Lithium 130AH battery

48V 6.3KW AC motor

400 AMP Curtis AC Controller

19mph max speed

## FEATURES

- Black dashboard with four cup holders/ cell phone holder
- 14" Color Matched Off Road Tire
- Speedometer
- USB
- Evolution on-board smart charger
- LED Headlights, LED tail lights, brake lights, turn signals, horn
- Rear view mirrors
- Clear foldable windshield



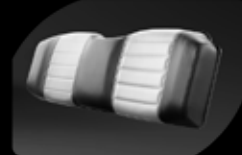
Luxury steering wheel



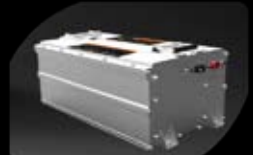
Color matched Dash with four cup holders/cell phone holder



14" Color Matched Off Road Tire



Two tone seat



Lithium battery

WHITE

Optional color

## EVOLUTION ELECTRIC VEHICLES INC

California Headquarters: 4552 Brickell Privado, Ontario CA 91761

Florida Operations: 3420 SW 7th st., Suite# 101, Ocala FL 34474

909-393-6800 info@evolutionelectricvehicle.com

www.evolutionelectricvehicle.com





# CARRIER 8 AC

## BODY & CHASSIS

TPO injection moulding front and rear body

## DIMENSIONS

Carrier 8: 176" x 55" x 76"

## POWER

Lithium 130AH battery  
48V 6.3KW AC motor  
400 AMP Curtis AC Controller  
19mph max speed

## FEATURES

- Black dashboard with four cup holders/ cell phone holder
- Plastic rear seat kit with storage & cup/ cell phone holders
- 14"Alum Wheel 215/35R14 Radial DOT Tire
- USB
- LED Headlights, LED tail lights, brake lights, turn signals, horn
- Rear view mirrors
- Clear foldable windshield
- Extended roof



Speedometer



Black dashboard with four cup holders/cell phone holder



14"aluminum wheel radial tire



Two tone seat



Plastic rear seat kit with storage & cup/cell phone holders

### Optional color

WHITE	YELLOW	BLUE	RED
SILVE	GOLD	NAVY BLUE	CANDY APPLE
BLACK	LIME GREEN	COPPER	

## EVOLUTION ELECTRIC VEHICLES INC

California Headquarters: 4552 Brickell Privado, Ontario CA 91761  
Florida Operations: 3420 SW 7th st., Suite# 101, Ocala FL 34474  
909-393-6800 info@evolutionelectricvehicle.com  
www.evolutionelectricvehicle.com





IMAGE FOR ILLUSTRATION PURPOSES ONLY



# CARRIER 11

## BODY & CHASSIS

E-coat and powder coated chassis  
Fiber glass body

## DIMENSIONS

5200×1740×1950mm

## Spec.

- 11 passengers
- 72V Lithium battery
- 72V 7.5KW AC motor
- US AC Curtis 400amp Controller
- MP3
- Radio and speaker
- USB reader
- Limited speed 30kph
- Hydraulic brake
- 12" Aluminum wheel 155R12 tire

## OPTIONS

- Abat vent
- Seat belts
- Police light and siren
- Power steering



## Optional color

WHITE	YELLOW	BLUE	RED
SILVE	GOLD	NAVY BLUE	CANDY APPLE
BLACK	LIME GREEN	COPPER	

## EVOLUTION ELECTRIC VEHICLES INC

California Headquarters: 4552 Brickell Privado, Ontario CA 91761

Florida Operations: 3420 SW 7th st., Suite# 101, Ocala FL 34474

909-393-6800 info@evolutionelectricvehicle.com

www.evolutionelectricvehicle.com





IMAGE FOR ILLUSTRATION PURPOSES ONLY



# CARRIER 14

## BODY & CHASSIS

E-coat and powder coated chassis  
Fiber glass body

## DIMENSIONS

5200×1740×1950mm

## Spec.

- 14 passengers
- 72V Lithium battery
- 72V 7.5KW AC motor
- US AC Curtis 400amp Controller
- MP3
- Radio and speaker
- USB reader
- Limited speed 30kph
- Hydraulic brake
- 12" Aluminum wheel 155R12 tire

## OPTIONS

- Abat vent
- Seat belts
- Police light and siren
- Power steering



## Optional color

WHITE	YELLOW	BLUE	RED
SILVE	GOLD	NAVY BLUE	CANDY APPLE
BLACK	LIME GREEN	COPPER	

## EVOLUTION ELECTRIC VEHICLES INC

California Headquarters: 4552 Brickell Privado, Ontario CA 91761  
Florida Operations: 3420 SW 7th st., Suite# 101, Ocala FL 34474  
909-393-6800 info@evolutionelectricvehicle.com  
www.evolutionelectricvehicle.com

