

## 18931-R 2500 Lb. Winch with Nylon Rope

### 19148 – Winch Installation Guide

**SPECIAL REQUIREMENTS:** Used on both Standard Cab & Crew Cab

| TOOLS REQUIRED        |                        | ESTIMATED INSTALL TIME | RECOMMENDED SKILL LEVEL |
|-----------------------|------------------------|------------------------|-------------------------|
| Philips Screw Driver  | General Purpose Pliers | 2 Hours                | Intermediate            |
| ½" Socket & Ratchet   | Wire Cutters           |                        |                         |
| ½" Wrench             | 9/16" Wrench           |                        |                         |
| 4 mm Allen Wrench     | 9/16" Socket & Ratchet |                        |                         |
| 7/16" Wrench          | 7/16" Socket & Ratchet |                        |                         |
| 3/8" Socket & Ratchet |                        |                        |                         |

Before you begin, check the contents of the kit against the parts list below. Immediately contact American Landmaster with any questions or discrepancies. American Landmaster cannot assume responsibility for any damage or injury resulting from incorrect installation of parts. American Landmaster suggests that accessory kits be installed by an authorized American Landmaster dealer or service center.

## !! WARNING !!

**Serious Injury or death could occur!**

- Use proper personal protective equipment during installation of this kit. Use safety glasses.

### PARTS LIST FOR AMERICAN LANDMASTER ACCESSORY KIT

- |                                |   |                                   |                                  |
|--------------------------------|---|-----------------------------------|----------------------------------|
| (1) Winch with Nylon Rope      | (1) Winch Harness                       | (1) Contactor with cables         | (1) Winch Bumper Bracket & Bolts |
| (1) Winch Switch               | (2) Winch Mounting bolts                | (12) Tie Wraps                    | (3) Christmas Tree Tie Wraps     |
| (1) Remote Winch Connector Cap | (4) Remote Connector Mounting Screws #6 | (4) Remote Connector Lock Nuts #6 |                                  |
| (1) Remote Winch Switch        | (4) 1.5" by ¼" Contactor Mounting Bolts | (4) 1/4" Contactor Lock Nuts      |                                  |



Fig 1 – Kit contents – 2500 Pound Winch

### 19148 Winch Installation Guide

## ASSEMBLY INSTRUCTIONS:

Instructional video: In Process

### Preliminary Dis-assembly instructions:

- 1- Remove windshield, if equipped.
- 2- Remove the hood. Remove three screws from each front fender and two screws from the front hood. Lift the hood off and set aside. If the vehicle has turn signals, disconnect the amber lights by depressing the release tab on each turn signal lamp connector and pull apart. Set the hood aside where it will not be damaged.



Figure 2: Removing Three Fender Fasteners



Figure 3: Removing Two Hood Fasteners

- 3- Remove the Black Instrument panel cover. Unscrew each stainless steel fasteners that holds down the black instrument panel cover using a 4 millimeter Allen wrench. Place the fasteners in a small container so they do not get lost. Lift the cover straight up and off the panel. Set the cover aside where it will not get damaged.



Black Instrument  
Panel cover

Figure 4: Removing Black Instrument Panel Cover

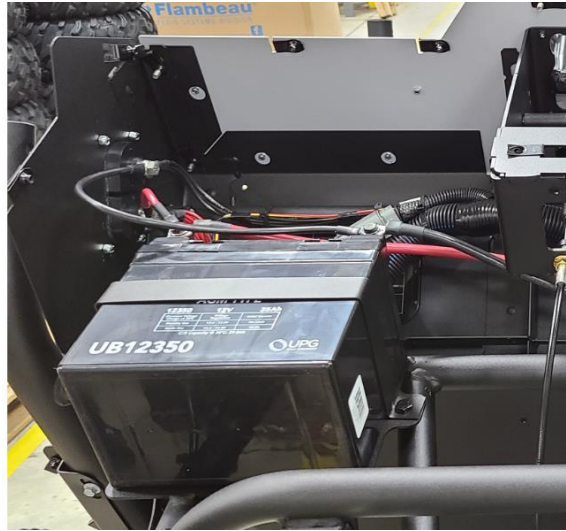


Figure 5: Remove Battery from Vehicle

- 4- Ensure that the ignition key is OFF.
- 5- Remove the negative battery cable first using a ½" socket and wrench. Fold cables back out of the way.
- 6- Remove the positive battery cables. Fold cables back out of the way.
- 7- Remove the battery hold down bracket by removing the two hold down bolts using a using a ½" socket and wrench. Save all bolts and nuts in a small container so that they do not get lost.
- 8- Remove the battery and store in a safe place.

### Winch Motor Installation:

- 1- Remove the existing frame bracket from the front of the vehicle by removing the two existing 5/16" bolts using a 9/16" wrench and socket.
- 2- Install the winch with mounting plate onto the front frame as shown below.

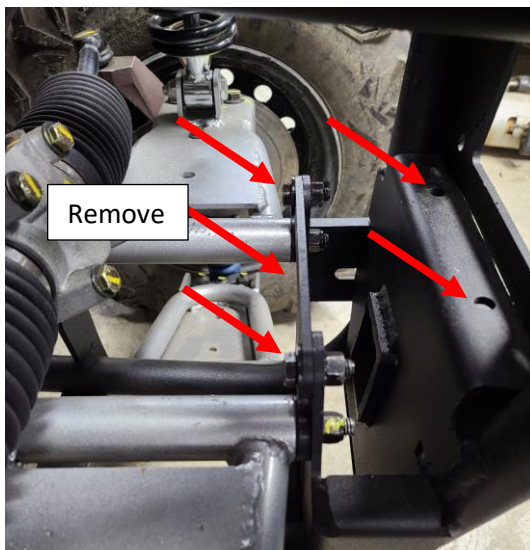




Figure 6: Remove Existing Bracket.

Figure 7: Mount Winch on Frame with 4 Bolts

- 3- Fasten the winch to the frame by re-using the two bolts that were removed plus the two additional 5/16" bolts provided in the kit. Re-use the original bracket attachment points plus the two points on the front frame.

**Winch Contactor Installation:**

- 1- Locate the power contactor from the kit.
- 2- The power and winch cables will already be attached to the winch contactor.
- 3- Mount the contactor and cables up to the rear ledge on the back side of the instrument panel frame on the passenger side. The red and black cables should be located closest to the dash panel. Make sure the red cable is not rubbing on any metal surfaces.



Figure 8: Winch Contactor Mounting Location

- 4- Use the four 1.5" by 1/4" bolts and lock nuts provided in the kit to secure the contactor to the instrument panel.
- 5- Route the black and red cables to the jump start stud to the left of the contactor. Remove the stud bolts with a 1/2" socket and attach the red cable to the other red cables as the positive feed. Attach the black cable to the other black cables as the negative feed.
- 6- Re-tighten the jump start stud bolts using a 1/2" socket wrench. Ensure that all of the red positive battery cables are oriented in such a manner that they are NOT rubbing or in contact with the frame of the instrument panel structure.
- 7- Secure the red and black cables to the instrument panel frame with two regular tie wraps on the pipe structure.
- 8- Position the yellow and black cables on the passenger side frame tube to the winch motor. Use Christmas tree tie wraps and insert 3 of these tie wraps into the holes provided on the frame.
- 9- Secure the green and yellow cables with these tie wraps.
- 10- Attach the yellow cable to the winch motor bolt that is to the front of the vehicle using a 3/8" socket.
- 11- Attach the green cable to the winch motor bolt that is to the rear of the vehicle using a 3/8" socket.
- 12- DO NOT OVERTIGHTEN.
- 13- Cut off the excess length of the tie wraps with a wire cutter. See picture below.

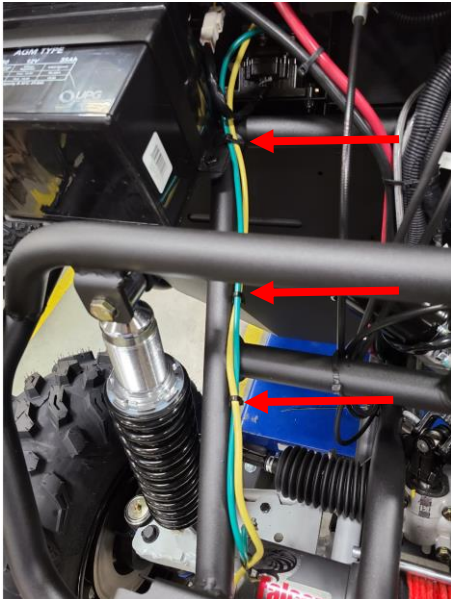


Figure 9: Cables Routed to the Winch Motor

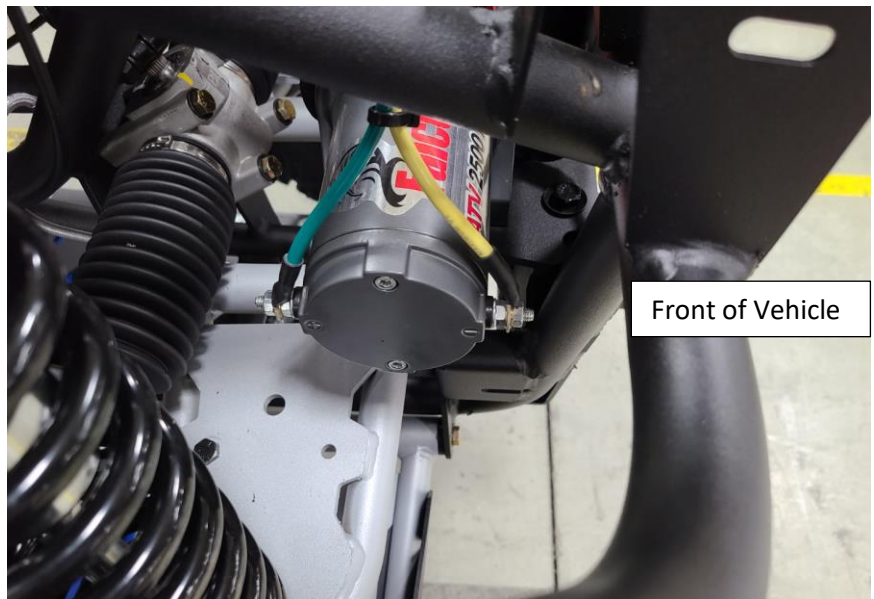


Figure 10: Proper Cable attachment to the Winch Motor

### Winch Switch Installation:

- 1- Choose and open spot on the seven switch panel to mount the winch switch.
- 2- Push the switch blank out from the rear.
- 3- Insert the winch switch from the front until it snaps into position.



Figure 11: Winch switch Installation

### Winch Harness Installation:

- 1- Locate the wire harness from the kit.
- 2- Lay the winch harness in the rear of the instrument panel.
- 3- Locate the left most gray 4 pin connector as shown below.



- 4- Remove the connector cap by depressing and holding it depressed to remove it from the instrument panel harness. **DO NOT REMOVE THE CAP BY PULLING ON THE WIRES.** Only pull apart by holding onto the connector.

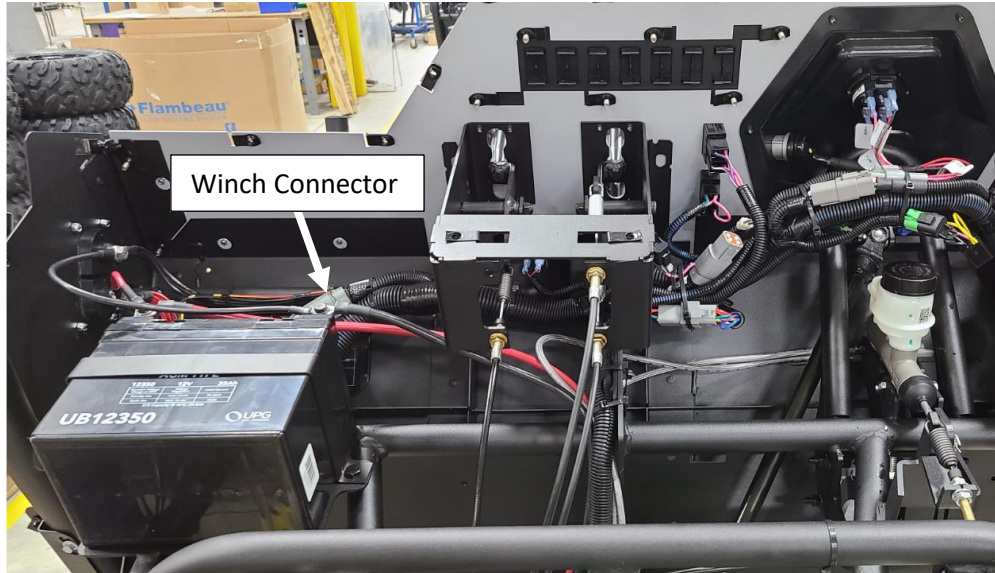


Figure 12: Winch Connector on Instrument Panel Harness

- 5- Connect the four pin connector of the winch harness to the open connector on the instrument panel harness.
6. Remove the rubber plug from the right most hole on the instrument panel.

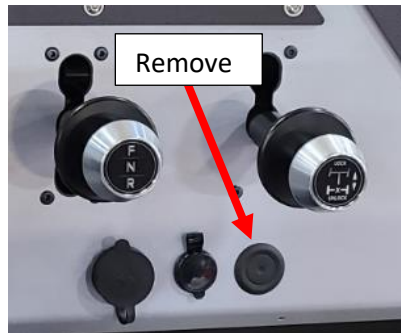


Figure 13: Remote Winch Plug

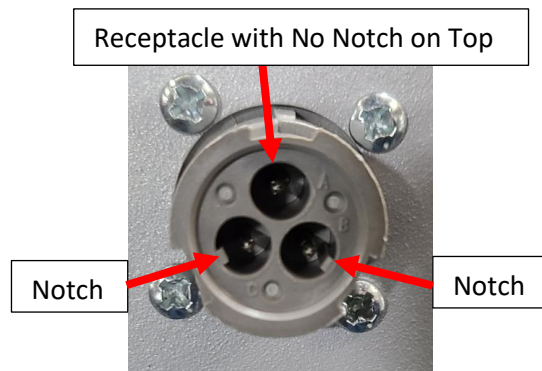


Figure 14: Remote Winch Switch Connector Orientation

7. Place the gray three pin connector through this hole with the connector oriented as shown in the picture.
8. Use the four #6 screws and nuts to attach this connector to the instrument panel face.
9. Use a Philips screwdriver to start threading the screws into the connector. This will hold the connector in place on the dash panel. Push the connector toward the dash panel from behind with one hand during this step.
10. Start the nuts on the back side to fully secure the connector.
11. Use a Philips screw driver on the front and a pliers on the back to complete the fastening of the connector.
12. Install the gray cap with a quarter turn when you are not using the remote winch switch.





Figure 15: Remote Winch Capped Off



Figure 16: Remote Winch Switch hooked up

13. Connect the white two pin connector of the winch harness to the winch contactor two pin white connector.

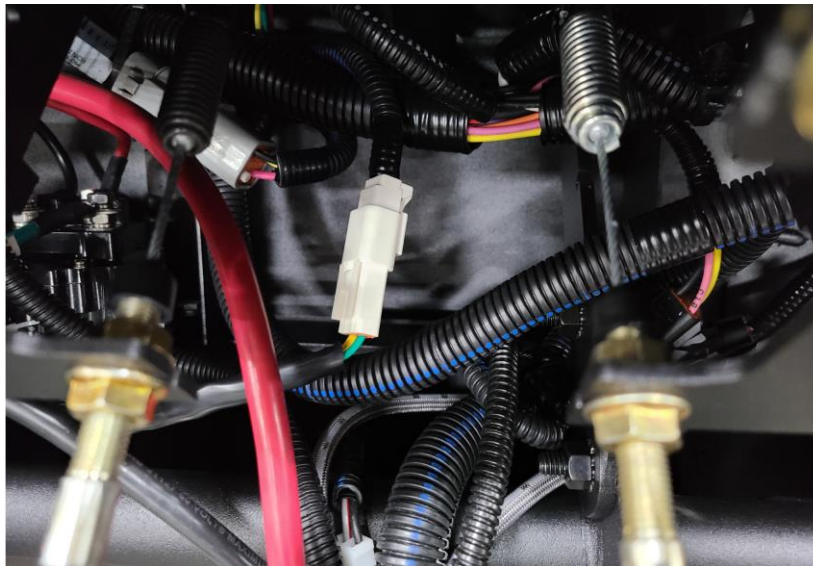


Figure 17: Connecting the Contactor to the Winch Harness

- 11 Trim off the tie wrap tails at all locations with wire cutters.
- 12 Reinstall the Battery and Battery Cables.

#### Testing the Winch:

- 1- Turn on the Ignition key to the RUN position.
- 2- Depress the Winch OUT portion of the dash mounted rocker switch.
- 3- Verify that the winch releases the winch rope.
- 4- Depress the Winch IN portion of the dash mounted rocker switch.
- 5- Verify that the winch reels in the winch rope.
- 6- Attach the orange remote winch switch to the dash panel mounted three pin connector.
- 7- Depress the Winch OUT portion of the hand held winch switch.
- 8- Verify that the winch releases the winch rope.
- 9- Depress the Winch IN portion of the hand held winch switch.
- 10- Verify that the winch reels in the winch rope.



**Finalizing the Installation:**

- 1- Reinstall the black Instrument Panel Cover.
- 2- Reinstall the hood. Hook up front turn signal lamps, if equipped.
- 3- Reinstall windshield, if equipped.